

# Cas-Ker Co.

 MY CAS-KER  
ACCOUNT NUMBER
 

## generic watch parts to fit

# RLX

*and other luxury brands  
for professional watch repair*

**1-800-487-0408**  
**CASKER.COM**



<b>BEZELS</b>	8-9
<b>BEZEL INSERTS</b>	8
<b>BRACELET SCREWS</b>	11
<b>CASE TUBES</b>	6
<b>CONNECTOR LINKS</b>	10
<b>CROWNS &amp; BUTTONS</b>	6
<b>CRYSTALS &amp; CRYSTAL GASKETS</b>	7
<b>DAY &amp; DATE DISCS</b>	3
<b>GASKETS</b>	6
<b>GIBS</b>	2
<b>HANDS</b>	3
<b>JEWELS</b>	2
<b>MAINSPRINGS</b>	4
<b>OSCILLATING WEIGHT AXLES</b>	4
<b>OTHER CASE PARTS</b>	8
<b>OTHER MOVEMENT PARTS</b>	4-5
<b>SCREWS</b>	2
<b>SPRING BARS</b>	11
<b>STAFFS</b>	2
<b>STEMS</b>	2
<b>WATCH BANDS-(BRACELETS)</b>	10

### OTHER MOVEMENT PARTS

BALANCE STOP SPRING	R2030.4460, R2130.245, R3035.5022	4
BRIDGE SCREW	R2230.5110, R3135.5110	2
CALENDAR WHEEL	R3055.5127	4
CAM YOKE SPRING	R3035.5091	4
CANNON PINION	R3035.5045, R3055.5122	4
CENTER WHEEL	R1570.7950	4
CLICK , CLICK SPRING	R2130.300, R3035.5035	4
CLUTCH WHEEL	R2135.205, R3135.205	4
DETENT SCREW	R1160.6649, R1530.7882	2
FOURTH WHEEL	R3035.5014, R3135.360, R3155.360	4
FRICTION SPRING	R720.4053	4
GREAT WHEEL	R2130.330, R3035.5012, R3135.330	5
HOUR WHEEL	R2135.280	5
HOUR WHEEL SEAT	R3055.5123-2, R3055.5123-3, R3055.5123-4	5
INTERMEDIATE CROWN WHEEL	3035.5031	5
MINUTE PINION	R3035.5011, R3055.5121	5
MINUTE WHEEL	R1530.7888, R3035.5043	5
OSCILLATING WEIGHT PINION	R1530.7910, R2130.550, R3035.5065	5
RATCHET DRIVE WHEEL	R2135.510, R3035.5069, R3135.510	5
RATCHET WHEEL	R2030.4445, R3035.5033, R3135.305	2, 5
SET BRIDGE	R2135.230	5
SET LEVER	R2135.220	5
SET LEVER PRESSURE SPRING SCREW	R3035.55037, R3135.5115	2
SET LEVER SPRING, JUMPER	R 2130.225, R3135.225	5
SET WHEEL	R3035.5042, R3135.250	5
STUD FOR CALENDAR WHEEL, CAM	R1530.8011, R3035.5092	5
SWEEP SECOND PINION	R1530.7838	5
THIRD WHEEL	R1530.7831, R2130.340, R3035.5013, R3135.340	5
TRANSMISSION WHEEL	R1530.7917	5
UNLOCKING YOKE CAM	R2135.630	5
WIG WAG PINION	R3035.5032	5
WINDING PINION	R2135.204, R3135.204	5

### OTHER CASE PARTS

BEZEL CLICK SPRING	R317.16800	8
CASE SCREW	R3135.5100	2, 8
CASE CLAMP	R127	8
CASE CLAMP SCREW	R166	2, 8

# Movement Parts: Jewels, Gibs, Screws, Stems, Staffs



## Jewels to fit RLX

R1530.7907	Upper Jewel for Oscillating Weight	<b>\$11.00</b>
R1530.7909	Lower Jewel for Oscillating Weight	<b>\$11.00</b>
R1530.8007	Jewel for Cam Yoke	<b>\$11.00</b>
R2135.9330	Lower Jewel for Oscillating Weight	<b>\$11.00</b>
R3135.9570	Upper Jewel for Oscillating Weight	<b>\$11.00</b>
R2235.9570	Upper Jewel for Oscillating Weight	<b>\$11.00</b>
R3135.9571	Lower Jewel for Oscillating Weight	<b>\$11.00</b>

R3135.95067	Reversing Wheel Jewel	<b>\$16.00</b>
R3135.9510	Drive Wheel Jewel for Ratchet	<b>\$11.00</b>
R3035.95063	Upper Setting for Oscillating Weight	<b>\$17.00</b>
R3035.95063-1	Lower Setting for Oscillating Weight Fits 2135, 3035, 3135, 4135	<b>\$17.00</b>
R3035.95090	Jewel for Cam Yoke (Date Jumper)	<b>\$11.00</b>
R2130.9570	Upper Jewel for Auto Axle	<b>\$11.00</b>



7911

**Gib**  
R1530.7911 **\$10.50**



4478

**Gib**  
R2030.4478 ..... **\$9.00**



560-2

**Gib**  
R2130.560.2 **\$10.00**



5066/1

**Gib .15mm thick**  
R3035.5066/1.. **\$7.50**



560-1

**Gib .18mm thick**  
R3135.560-1 .... **\$9.00**



**Bridge Screw**  
R2230.5110 **\$8.50**  
R3135.5110 **\$8.50**



**Detent Screw**  
R1160.6649 **\$4.00**  
R1530.7882 **\$6.50**



**Ratchet Wheel  
Screw**  
R3035.55033 **\$5.00**  
R3135.5210 **\$8.50**



5066/2

**Gib .165mm thick**  
R3035.5066/2 **\$7.50**



560-2

**Gib .165mm thick**  
R3135.560-2 **\$9.00**



**Set Lever Pressure  
Spring Screw**  
R1210.7562 **\$8.50**



**Case Screw**  
R166 **\$5.00**  
R2130.5100 **\$8.50**  
R3135.5100 **\$5.00**



**Blue Screw  
for Date Indicator**  
R3135.5600 **\$8.50**



LIMITED  
SUPPLY

**Set Lever Pressure  
Spring Screw**  
R3035.55037 **\$6.00**



**Click, Set Lever  
Spring Screw**  
R3135.5115 **\$8.50**



<b>Staffs</b>			
Number	Fits	Each	3 @
R1400.723		<b>\$8.00</b>	<b>\$7.00</b>
R1530.723	1530/1570	<b>\$8.00</b>	<b>\$7.00</b>
R2030.723	2030/2035	<b>\$8.00</b>	<b>\$7.00</b>
R2130.723	2130/2135	<b>\$8.00</b>	<b>\$7.00</b>
R3000.723		<b>\$8.00</b>	<b>\$7.00</b>
R3035.723		<b>\$8.00</b>	<b>\$7.00</b>
R3135.723		<b>\$8.00</b>	<b>\$7.00</b>



## Stems

(Quantity prices each apply to 3 of one number.)

Number	Fits	Each	3 @
R1160.401	1120-1160	<b>\$10.00</b>	----
R1210.401	1210, 1215, 1220, 1225	<b>\$6.00</b>	<b>\$5.00</b>
R1400.401		<b>\$10.00</b>	----
R1530.401	1530, 1535, 1555, 1560, 1570, 1575	<b>\$4.75</b>	<b>\$4.50</b>
R1600.401		<b>\$6.00</b>	<b>\$5.00</b>
R2030.401	2035	<b>\$4.75</b>	<b>\$4.50</b>
R2130.401	2135	<b>\$4.75</b>	<b>\$4.50</b>
R2230.401	2230	<b>\$10.00</b>	----
R3035.401	3055	<b>\$4.75</b>	<b>\$4.50</b>
R3135.401	3155, 3185	<b>\$4.75</b>	<b>\$4.50</b>

Cas-Ker Co. is independent of and is not affiliated with or sponsored by RLX Watch U.S.A. Inc. The RLX warranty does not apply to non-genuine replacement items supplied by Cas-Ker Co.

# Generic Day & Date Discs, Hands



**Date Disc to fit 2135**  
R2135.6900.1  
Champagne  
**\$70.00**



**Date Disc to fit 3035**  
R3035.5099.1  
Champagne  
**\$45.00**



**Date Disc to fit 3035**  
R3035.5099.2  
White  
**\$45.00**



**Date Disc to fit 3055**  
R3055.5134.1  
Champagne  
**\$45.00**



**Date Disc to fit 3135**  
R3135.16100  
Champagne  
**\$45.00**



**Date Disc to fit 3135**  
R3135.16200  
White  
**\$45.00**



**Date Disc to fit 3155**  
R3155.16200  
White  
**\$45.00**



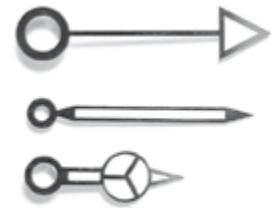
**Day Disc to fit 3055**  
R3055.5135.101  
Champagne w/Jewels  
**\$45.00**



**Day Disc to fit 3155**  
R3155.17101  
Champagne  
**\$45.00**



**Day Disc to fit 3155**  
R3155.17201  
White  
**\$45.00**



## Generic Hands to fit RLX

## Generic Hands to fit RLX

R1530SD	Silver Diver	\$19.95
R1530YD	Yellow Diver	\$19.95
R1565SGMT	Silver GMT	\$19.95
R1565YGMT	Yellow GMT	\$19.95
R1570S	Silver DateJust	\$19.95
R1570Y	Yellow DateJust	\$19.95
R2035S	Silver DateJust Ladies	\$19.95
R2035SS	Silver Short for Diamond Markers	\$19.95
R2035SLP	Silver Long Post for Thick Dial	\$19.95
R2035Y	Yellow DateJust Ladies	\$19.95
R2035YLP	Yellow Long Post for Thick Dial	\$19.95
R2035YS	Yellow Short for Diamond Markers	\$19.95
R2135S	Silver DateJust Ladies	\$19.95
R2135SLP	Silver Long Post for Thick Dial	\$19.95
R2135Y	Yellow DateJust Ladies	\$19.95
R2135YS	Yellow Short for Diamond Markers	\$19.95
R2230S	Silver DateJust Ladies	\$19.95
R2230SS	Silver Short for Diamond Markers	\$19.95
R2230YLP	Yellow Long Post for Thick Dial	\$19.95
R2230YS	Yellow Short for Diamond Markers	\$19.95
R3035SD	Silver Diver (fits 3035/3135)	\$19.95
R3035Y	Yellow DateJust (fits 3035/3135)	\$19.95
R3035YD	Yellow Diver (fits 3035/3135)	\$19.95
R3035S	Silver DateJust (fits 3035/3135)	\$19.95
R3085SGMT	Silver GMT	\$19.95
R3085YGMT	Yellow GMT	\$19.95



### Generic Diamond Cut Hand Assortment

Same high quality as the genuine.

Assortment contains one set each of the four most popular:

White Diver HMSS 1530SD (1565, 1575)

Yellow Luminous HMSS 1570Y (1530, 1575)

Yellow Luminous HMSS 2035 (2030)

Yellow Luminous HMSS 2135 (2130)

**900.862** Generic Hand Assortment \$79.80 Value **\$65.95**

Refills **\$19.95/Set**

Cas-Ker Co. is independent of and is not affiliated with or sponsored by RLX Watch U.S.A. Inc. The RLX warranty does not apply to non-genuine replacement items supplied by Cas-Ker Co.

# Axles, Mainsprings, and Watch Movement Parts

From mainsprings to wig wag pinions, Cas-Ker has the parts you need.



## Mainsprings

Price for 3 of one number.

Number	Fits Calibre	Each	3@ea
R1160.770	1220 Ltd Supply		<b>\$36.95</b>
R1220.770	1220	<b>\$22.00</b>	-----
R1400.770	1400	<b>\$14.95</b>	<b>\$12.95</b>
R1530.770	1530/1570	<b>\$14.95</b>	<b>\$12.95</b>
R1600.770	1600	<b>\$18.95</b>	<b>\$16.95</b>
R2030.770	2030/2035	<b>\$14.95</b>	<b>\$12.95</b>
R2130.770	2130/2135	<b>\$14.95</b>	<b>\$12.95</b>
R2230.770	2230/2235	<b>\$14.95</b>	<b>\$12.95</b>
R3000.770	3000	<b>\$18.95</b>	<b>\$16.95</b>
R3035.770	3035	<b>\$14.95</b>	<b>\$12.95</b>
R3135.770	3135	<b>\$14.95</b>	<b>\$12.95</b>
R4030.770	4030	<b>\$22.00</b>	-----
R4130.770	4130	<b>\$18.95</b>	<b>\$18.95</b>



## Axle for Oscillating Weight

R1570.7906	<b>\$15.00</b>
R2130.568	<b>\$15.00</b>
R2230.568	<b>\$15.00</b>
R3035.5064	<b>\$15.00</b>
R3135.568	<b>\$15.00</b>

## Watch Movement Parts



Balance Stop Spring

R2030.4460 **\$12.00**

R2130.245 **\$13.00**

R3035.5022 **\$8.50**



Calendar Wheel

R3055.5127 **\$17.00**



Cam Yoke Spring

R3035.5091 **\$7.00**



Click

R2130.300 **\$13.00**



Cannon Pinion

R3035.5045 **\$13.00**

R3055.5122 **\$13.00**



Center Wheel with Cannon Pinion

R1570.7950 **\$50.00**



Click Spring

R3035.5035 **\$7.00**



LIMITED SUPPLY

Clutch Lever

R1530.7885 **\$15.00**

R3035.5039 **\$15.00**



Clutch Wheel

R2135.205 **\$13.00**

R3135.205 **\$13.00**



LIMITED SUPPLY

Driving Wheel over Third Wheel

R1530.7837 **\$18.00**

Cas-Ker Co. is independent of and is not affiliated with or sponsored by RLX Watch U.S.A. Inc. The RLX warranty does not apply to non-genuine replacement items supplied by Cas-Ker Co.

# Watch Movement Parts



**Fourth Wheel**

- R1600.1811 **\$36.00**
- R3035.5014 **\$36.00**
- R3135.360 **\$36.00**
- R3155.360 **\$36.00**



**Friction Spring**

- Ø 5.9mm
- R720.4053 **\$30.00**



**Great Wheel**

- R2130.330 **\$36.00**
- R3035.5012 **\$36.00**
- R3135.330 **\$36.00**



**Hour Wheel**

- R2135.280 **\$18.00**



**Hour Wheel Seat**  
for 3055

- .03, .04, .05 Thickness
- R3055.5123-2.03 **\$3.75**
- R3055.5123-3.04 **\$3.75**
- R3055.5123-4.05 **\$3.75**



**Intermediate Crown Wheel - Small**

- R3035.5031 **\$11.00**



**Minute Pinion with Cannon Pinion**

- R3035.5011 **\$36.00**
- R3055.5121 **\$36.00**



**Minute Wheel**

- R1530.7888 **\$16.00**
- R3035.5043 **\$11.00**



**Oscillating Weight Pinion**

- R1530.7910 **\$15.00**
- R3135.550 **\$15.00**



**Pallet Fork Arbor**

- R3135.421 **\$79.00**

**Oscil. Wt Pinion fits 2130 & 2135**

- R2130.550 **\$15.00**
- R3035.5065 **\$15.00**



**Ratchet Drive Wheel**

- R2135.510 **\$36.00**
- R3035.5069 **\$36.00**
- R3135.510 **\$36.00**



**Ratchet Wheel**

- R2030.4445 **\$13.00**
- R2130.305 **\$15.00**
- R3035.5033 **\$19.00**
- R3135.305 **\$17.00**



**Set Bridge**

- R2135.230 **\$20.00**



**Set Lever**

- R1530.7881 **\$30.00**
- R2135.220 **\$30.00**



**Set Lever Spring**

- R3135.225 **\$7.50**



**Set Lever Spring (Jumper)**

- R2130.225 **\$12.00**



**Set Wheel**

- R3035.5042 **\$9.00**
- R3135.250 **\$7.00**



**Stud for Calendar Wheel**

- R3035.5092 **\$11.00**



**Stud for Cam**

- R1530.8011 **\$5.00**



**S.S. Pinion**

- R1530.7838 **\$30.00**



**Third Wheel**

- R1530.7831 **\$36.00**
- R2130.340 **\$36.00**
- R3035.5013 **\$36.00**
- R3135.340 **\$36.00**



**Transmission Wheel**

- R1530.7917 **\$36.00**



**Unlocking Yoke Cam**

- R2135.630 **\$15.00**



**Wig Wag Pinion**

- Fits 3035 & 3055
- R3035.5032 **\$11.00**



LIMITED SUPPLY

**Winding Bridge**

- R3035.5006 **\$17.00**



**Winding Pinion**

- R1530.7870 **\$30.00**
- R2135.204 **\$15.00**
- R3135.204 **\$15.00**

Cas-Ker Co. is independent of and is not affiliated with or sponsored by RLX Watch U.S.A. Inc. The RLX warranty does not apply to non-genuine replacement items supplied by Cas-Ker Co.

# Crowns, Tubes, Gaskets



## Generic Crowns to fit RLX

Eight piece assortment contains two each Yellow and Stainless Steel Crowns sizes 5.30 and 6.00. Plus we'll include two each 5.3 and 6.0 Case Tubes free!

**999.129 Assortment A \$210.00 Value for just \$99.00!**

Number	Description	Color	Diam.	Price Each
902.294	Crown	Yellow	5.30	\$22.50
902.295	Crown	White	5.30	\$22.50
902.296	Crown	Yellow	6.00	\$22.50
902.297	Crown	White	6.00	\$22.50
R5.3	Case Tube w/Gasket		5.30	\$7.95
R6.0	Case Tube w/Gasket		6.00	\$7.95

Also available, not in assortment:

Number	Description	Color	Diam.	Price Each
902.298	Crown	Yellow	7.00	\$40.00
902.299	Crown	White	7.00	\$40.00
R7030	Case Tube w/Gasket		7.00	\$24.00
R530C	Crown Gasket		5.30	\$2.00
R600C	Crown Gasket		6.00	\$2.00
R530T	Tube Gasket		5.30	\$2.00
R600T	Tube Gasket		6.00	\$2.00

## Crowns sold individually

902.294	Y	5.3mm	\$22.50
902.295	S	5.3mm	\$22.50
902.296	Y	6.0mm	\$22.50
902.297	S	6.0mm	\$22.50
902.298	Y	7.0mm	\$40.00
902.299	S	7.0mm	\$40.00

## Screw Type Push Buttons for Daytona



R6265S	Steel	\$75.00
R6265Y	Yellow	\$80.00



## Crown & Tube Gaskets to fit RLX, TAG, Cartier and Baume & Mercier

Assortment contains 66 gaskets to fit seven RLX numbers, and one each to fit TAG, Cartier and Baume & Mercier. Refills available.

**999.101 Assortment \$34.95**

Number	Size	Gasket for	Refill	3@ea	12@ea
R530T	5.30	Rolex Tube	\$2.00	\$1.50	\$1.00
R530C	5.30	Rolex Crown	\$2.00	\$1.50	\$1.00
R600T	6.00	Rolex Tube 7.00/7.03	\$2.00	\$1.50	\$1.00
R600C	6.00	Rolex Crown	\$2.00	\$1.50	\$1.00
R700C	7.00	Rolex Crown	\$2.00	\$1.50	\$1.00
R703P	7.03	Rolex Outside Tube	\$2.00		
R703S	7.03	Rolex Flat btwn Tube & Case	\$3.00		
999.100.09		TAG Crown	\$2.00		
999.100.10		Cartier Crown	\$2.00		
999.100.11		Baume & Mercier Crown	\$2.00		

## Crown Gaskets

R530C	5.3mm	\$2.00ea; 3@\$1.50 ea; 12@\$1.00 ea
R600C	6.0mm	
R700C	7.0mm	

## Case Tubes with Gaskets

R5.3	5.3mm Tube	\$7.95
R5.3.OS	5.3mm Tube Old Style	\$7.95
R6.0	6.0mm Tube	\$7.95
R6.0.OS	6.0mm Tube Old Style	\$7.95
R7030		\$24.00

## Tube Gaskets

R530T	5.3mm	\$2.00ea; 3@\$1.50 ea; 12@\$1.00 ea
R600T	6.0mm	
R703S	7.0mm Flat Gasket for R7030 Tube	
R703P	7.0mm Large O-Ring for Outside R7030 Tube	\$2.00ea

Cas-Ker Co. is independent of and is not affiliated with or sponsored by RLX Watch U.S.A. Inc. The RLX warranty does not apply to non-genuine replacement items supplied by Cas-Ker Co.

# Crystals, Crystal Gaskets & Case Back Gaskets



## Generic Crystal Assortment

12 replacement plastic crystals to fit RLX.

- |                   |                   |
|-------------------|-------------------|
| 1 ROL.108 Cyclops | 3 ROL.118 Cyclops |
| 1 ROL.114 Cyclops | 1 ROL.129 Cyclops |
| 1 ROL.116 Cyclops | 2 ROL.135 Cyclops |
| 2 ROL.117 Cyclops | 1 ROL.145 Cyclops |

**901.012 Crystal Assortment \$74.95**

Also available:

- |                 |                 |
|-----------------|-----------------|
| ROL.3 Tropic    | ROL.106 Cyclops |
| ROL.7 Tropic    | ROL.107 Cyclops |
| ROL.12 Tropic   | ROL.111 Cyclops |
| ROL.14 Tropic   | ROL.112 Cyclops |
| ROL.19 Tropic   | ROL.113 Cyclops |
| ROL.21 Tropic   | ROL.121 Cyclops |
| ROL.26 Tropic   | ROL.123 Cyclops |
| ROL.30 Tropic   | ROL.124 Cyclops |
| ROL.101 Cyclops | ROL.125 Cyclops |
| ROL.103 Cyclops | ROL.127 Cyclops |
| ROL.104 Cyclops | ROL.143 Cyclops |

**\$8.95ea 3@\$7.95ea**  
(3 of one number)



## Generic Case Back Gasket Assortment

105 piece assortment contains non-genuine sizes to fit RLX. 35 numbers.

**910.105 List \$69.00 \$47.95**

R29.182.84	R29.245.105	R29.303.8
R29.192.86	R29.250.8	R29.307.9
R29.205.105	R29.265.106	R29.310.8
R29.208.8	R29.270.75	R29.310.56
R29.210.74	R29.270.8	R29.312.8
R29.210.124	R29.287.105	R29.317.8
R29.213.66	R29.290.8	R29.317.10
R29.214.64	R29.292.76	R29.322.10
R29.215.8	R29.292.85	R29.325.10
R29.216.5	R29.293.106	R29.337.8
R29.240.76	R29.298.8	R29.337.10
R29.243.86	R29.302.86	

Refills **\$2.50ea 3 @ \$2.25ea**



## Generic Crystal Gaskets to fit RLX

R29.192.1	<b>\$3.25</b>
R29.206.1	<b>\$3.25</b>
R29.246.1	<b>\$7.25</b>
R29.286.1	<b>\$7.25</b>
R29.286.1H High	<b>\$7.25</b>
R29.295.1	<b>\$3.25</b>
R29.295.2 High	<b>\$7.25</b>
R29.282.1	<b>\$7.25</b>
R29.318.1	<b>\$3.25</b>



## Generic Sapphire Crystals to fit RLX

Gasket Included with each.

ROL.172C	<b>\$20.95</b>
ROL.185	<b>\$20.95</b>
ROL.192	<b>\$25.95</b>
ROL.200C	<b>\$20.95</b>
ROL.206C	<b>\$20.95</b>
ROL.246C	<b>\$30.95</b>
ROL.269C	<b>\$25.95</b>
ROL.270C	<b>\$25.95</b>
ROL.282C	<b>\$25.95</b>
ROL.286	<b>\$30.95</b>
ROL.286C	<b>\$30.95</b>
ROL.295C	<b>\$25.95</b>
ROL.295C-2 with High Gasket	<b>\$30.95</b>
ROL.315C	<b>\$25.95</b>
ROL.318C	<b>\$29.95</b>
300P Ladies Parabolic w/gasket	<b>\$49.95</b>
500P Gents Parabolic w/gasket	<b>\$49.95</b>

Call 1-800-487-0408  
or fax 1-800-487-5848  
by 3:00 PM your local time  
Monday thru Thursday for  
**Overnight Delivery.**

# Case Parts, Bezels & Bezel Inserts



**Bezel Click Spring**  
R317.16800 **\$4.50**



**Case Screw**  
R3135.5100 **\$5.00**



**Case Clamp**  
to fit Men's RLX  
R127 **\$5.00 ea**



**Case Clamp Screw**  
R166 **\$5.00 ea**  
**3 @ \$4.50 ea**

*Additional  
RLX Screws on  
page 2.*

## Bezels & Bezel Inserts

*Please Note: Stainless Steel Bezels  
must be polished before installing.*



**Stainless Steel Bezel to fit GMT Plastic Model**  
Fits Case #1675.  
Inside Diameter 30.00mm  
Outside Diameter 39.10mm.  
R.1675.BEZ **\$54.95**



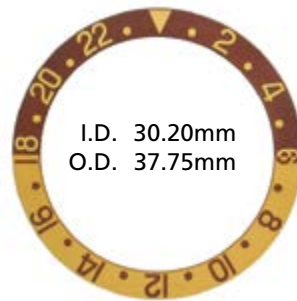
**Stainless Steel Bezel to fit Submar. & GMT Sapphire**  
Fits Cases 16613 & 16800.  
Inside Diameter 30.50mm  
Outside Diameter 39.80mm.  
R.16800.BEZ **\$54.95**



**Bezel Springs**  
R316.5512 Fits 5512, 5513 **\$7.50**  
R316.16750 **\$7.50**  
R316.16800 **\$7.50**



**Generic 14KY Threaded Front Bezel to fit RLX Bubble Back 3131**  
ROL.425 Reg. \$650.00 **Sale \$395.00**



**Generic Bezel Insert**  
Bown/Gold  
Limited Quantity.  
999.657.01 **\$7.50**

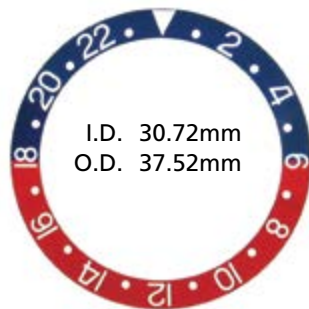


# Generic Rotating Bezel Inserts to fit RLX



I.D. 30.32mm  
O.D. 37.72mm

**R315.16750.1 Blck/Silver \$30**  
GMT for Plastic Crystal  
Fits: 1675/0 16750



I.D. 30.72mm  
O.D. 37.52mm

**R315.16750.6 Blue/Red \$30**  
GMT for Plastic Crystal  
Fits: 1675/0 16750



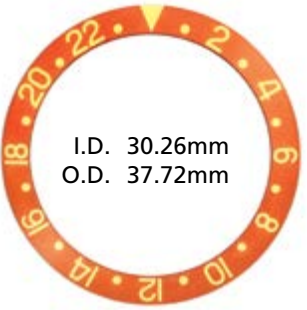
I.D. 30.14mm  
O.D. 37.80mm

**R315.16753.1 Black/Yel \$30**  
GMT for Plastic Crystal Fits:  
1675/3 1675/8 16753



I.D. 30.30mm  
O.D. 37.68mm

**R315.16753.5 Brn/Gold \$30**  
GMT for Plastic Crystal  
Fits: 1675/3 16753



I.D. 30.26mm  
O.D. 37.72mm

**R315.1675.3 Brwn/Gold \$30**  
GMT for Plastic Crystal  
Fits: 1675/8



I.D. 29.82mm  
O.D. 36.32mm

**R315.16660 Black/Silver \$35**  
Sea Dweller for Sapphire Crystal  
Fits: 16660



I.D. 30.72mm  
O.D. 37.52mm

**R315.16710 Black/Silver \$35**  
GMT for Sapphire Crystal  
Fits: 16710



I.D. 30.68mm  
O.D. 37.52mm

**R315.16758 Black/Yel \$30**  
GMT for Sapphire Crystal  
Fits: 16758-1 16758



I.D. 30.30mm  
O.D. 36.50mm

**R315.1680 Green/Silver \$35**  
Submariner for Plastic Crystal  
Fits: 1680G



I.D. 30.30mm  
O.D. 36.50mm

**R315.1680.1 Black/Gold \$35**  
Submariner for Plastic Crystal  
Fits: 1680-1



I.D. 30.30mm  
O.D. 36.50mm

**R315.1680.2 Blue/Yellow \$35**  
Submariner for Plastic Crystal  
Fits: 1680/8



I.D. 30.84mm  
O.D. 37.52mm

**R315.16800 Black/Silver \$35**  
Submariner for Sapphire Crystal  
Fits: 16800-1 16610 15800



I.D. 30.72mm  
O.D. 37.44mm

**R315.16808 Blk/Yellow \$35**  
Submariner for Sapphire Crystal  
Fits: 16808-1 16613 16618  
16803 16808



I.D. 30.72mm  
O.D. 37.56mm

**R315.16808.2 Blue/Gold \$35**  
Submariner for Sapphire Crystal  
Fits: 16613 16618 16803  
16808



I.D. 30.36mm  
O.D. 36.50mm

**R315.5513.1 Black/Silver \$35**  
Submariner for Plastic Crystal  
Fits: 1665/0 1680/0 5512/0  
5513/0 7016 7928  
76100 94010 94110

# Generic RLX Watch Bands (Bracelets) & Links

## High Quality Watch Bands to fit RLX



**680.071** Stainless Steel to fit Ladies Jubilee 13mm **\$21.95**

**1415TC** Two-Tone to fit Ladies Jubilee 13mm **\$20.00**

**680.072** Stainless Steel to fit Men's Jubilee 20mm **\$21.95**

**1402TC** Two-Tone to fit Men's Jubilee 20mm **\$21.50**



**680.073** to fit Ladies Oyster 13mm **\$21.95**

**680.075** to fit Men's Oyster w/Extension Bracelet 20mm **\$21.95**



### Bracelet Connector Links Assortment

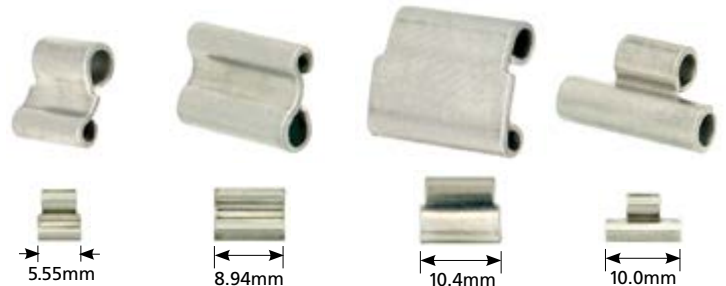
Contains 8 different links to fit RLX bracelets; four each for Jubilee and Oyster models, both opening and other sides.

**999.659** Assortment **\$46.95**

Refills (below) **\$7.75 each**

### Bracelet Connector Links for Jubilee Style

### Bracelet Connector Links for Oyster Style



**999.659.01**  
Opening Side

**999.659.02**  
Opening Side

**999.659.05**  
Other Side

**999.659.06**  
Other Side

**999.659.04**  
Opening Side

**999.659.03**  
Opening Side

**999.659.07**  
Other Side

**999.659.08**  
Other Side

Cas-Ker Co. is independent of and is not affiliated with or sponsored by RLX Watch U.S.A. Inc. The RLX warranty does not apply to non-genuine replacement items supplied by Cas-Ker Co.

# Generic RLX Bracelet Pins & Spring Bars



## Screw Pins to fit RLX Bracelets

Assortment of 90 Stainless Steel pins to fit RLX, Five each of 18 sizes:

Number	Thread	Diam.	Lngh.	Number	Thread	Diam.	Lngh.
999.658.01	0.80	0.95	8.80	999.658.10	1.20	1.60	14.40
999.658.02	1.00	1.30	12.10	999.658.11	1.20	1.50	15.20
999.658.03	1.10	1.70	13.60	999.658.12	1.20	1.20	15.50
999.658.04	1.10	1.20	15.00	999.658.13	1.40	1.40	10.00
999.658.05	1.20	1.70	8.60	999.658.14	1.40	1.70	14.00
999.658.06	1.20	1.20	10.00	999.658.15	1.40	1.70	15.00
999.658.07	1.20	1.70	11.00	999.658.16	1.40	1.50	15.90
999.658.08	1.20	1.70	13.00	999.658.17	1.40	1.50	17.30
999.658.09	1.20	1.70	14.00	999.658.18	1.40	1.50	19.40

**999.658** Screw Assortment

**\$34.95**

Refills

**\$6.25/pack of 10**

## Screws to fit RLX Bracelets

18K Screw to fit RLX Men's President.  
**R900.865.01** Limited Supply **\$45.00ea**

18K Screw to fit RLX Boys Gold.  
**R900.865.02** Limited Supply **\$35.00ea**

18K Screw to fit RLX Lady President  
**R900.865.03** Limited Supply **\$45.00ea**

Stainless Steel Screw to fit RLX 20mm Oyster (Submariner).  
**R900.865.04** **\$6.00ea 3@\$5.00ea**

Stainless Steel Screw to fit RLX 19 or 20mm Jubilee S/S or S/S & Gold Bracelet (Datejust).  
**R900.865.05** **\$6.00ea 3@\$5.00ea**

Stainless Steel Screw to fit Ladies RLX 13mm Jubilee S/S or S/S & Gold.  
**R900.865.06** **\$6.00ea 3@\$5.00ea**

Stainless Steel Screw to fit Ladies RLX 13mm Oyster Heavy.  
**R900.865.07** **\$6.00ea 3@\$5.00ea**

Stainless Steel Screw to fit Mens RLX 14mm Oyster Date.  
**R900.865.08** **\$6.00ea 3@\$5.00ea**



## Spring Bar Assortment

Assortment contains 11 different styles of the most popular spring bars for ladies and men's RLX watches, 36 total.

R23.9280 Men's 19mm

R23.6917N New Ladies Datejust

R23.9290 Men's 20mm

R23.9260 Ladies' 13mm

R23.9291 Submariner 20mm

R23.1000 for Clasp 10mm

R23.9380 Men's 20mm

R23.1300 for Clasp 13mm

R23.9382 President 20mm

R23.1600 for Clasp 16mm

R23.9382GP President Gold Plated

**901.036** Spring Bar Asst **\$39.95**

Refills

**\$2.75ea**



## Generic Spring Bars

R23.6917N New Style Ladies Datejust

R23.9260 Ladies' 13mm

R23.9280 Men's 19mm

R23.9290 Men's 20mm

R23.9291 Submariner 20mm

R23.9380 Men's 20mm

R23.9382 President 20mm

R23.9382GP President Gold Plated

R23.1000 for Clasp 10mm

R23.1300 for Clasp 13mm

R23.1600 for Clasp 16mm

**Spring Bars** **\$2.75ea**

# Looking for genuine Rolex® parts?

Visit [casker.com](http://casker.com) to see our complete line of genuine Rolex® watch parts, organized by Rolex® model number so it's easy to find exactly what you need. Experience the best service in the watch material business - depend on us for a great selection of genuine and generic parts for Rolex® and other luxury brand watches.

Cas-Ker Co. is independent of and is not affiliated with or sponsored by Rolex® Watch U.S.A. Inc. The Rolex® warranty does not apply to non-genuine replacement items supplied by Cas-Ker Co.



## Cas-Ker Co.

CALL **1-800-487-0408**

FAX **1-800-487-5848**

**WWW.CASKER.COM**

2250 CIVIC CENTER DR.  
CINCINNATI, OH 45231 USA

EMAIL [CASKER@CASKER.COM](mailto:CASKER@CASKER.COM)