



Cosmograph Daytona

Oyster, 40 mm, Oystersteel

**This Oyster Perpetual
Cosmograph Daytona in
Oystersteel with a white
dial and an Oyster
bracelet, features a
black Cerachrom bezel
with tachymetric scale.**

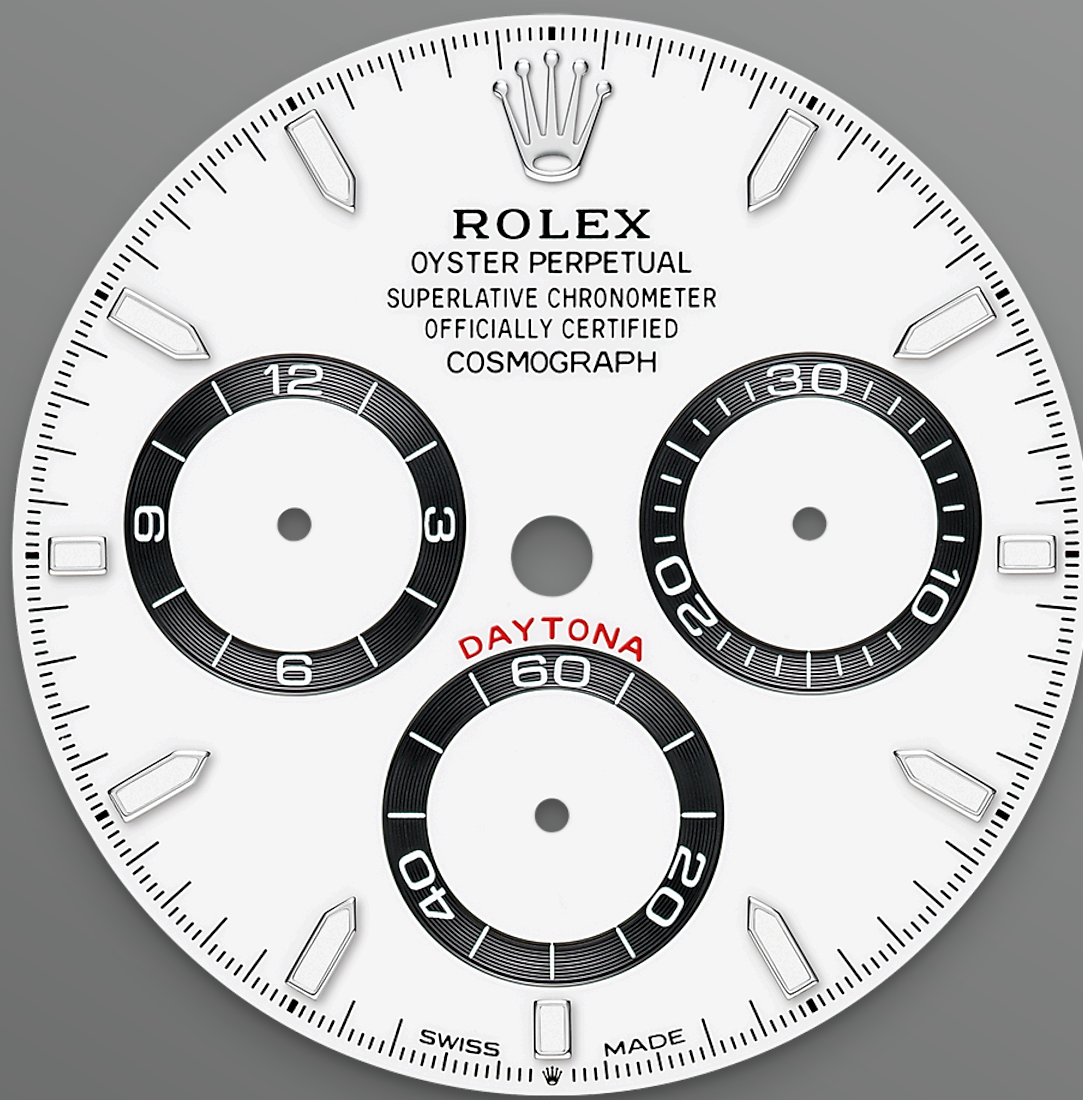


THE TACHYMETRIC SCALE

High-performance chronograph

A key part of the model's identity is the bezel moulded with a tachymetric scale for measuring average speeds of up to 400 miles or kilometres per hour. Blending high technology with sleek aesthetics, the black bezel is reminiscent of the 1965 model that was fitted with a black Plexiglas bezel insert.

The monobloc Cerachrom bezel in high-tech ceramic offers a number of advantages: it is



WHITE DIAL

With chronograph counters

This model features a white dial with snailed counters, 18 kt gold applique hour markers and hands with a Chromalight display, a highly-legible luminescent material.

The central sweep seconds hand allows an accurate reading of 1/8 second, while the two counters on the dial display the lapsed time in hours and minutes. Drivers can accurately map out their track times and tactics without fail.

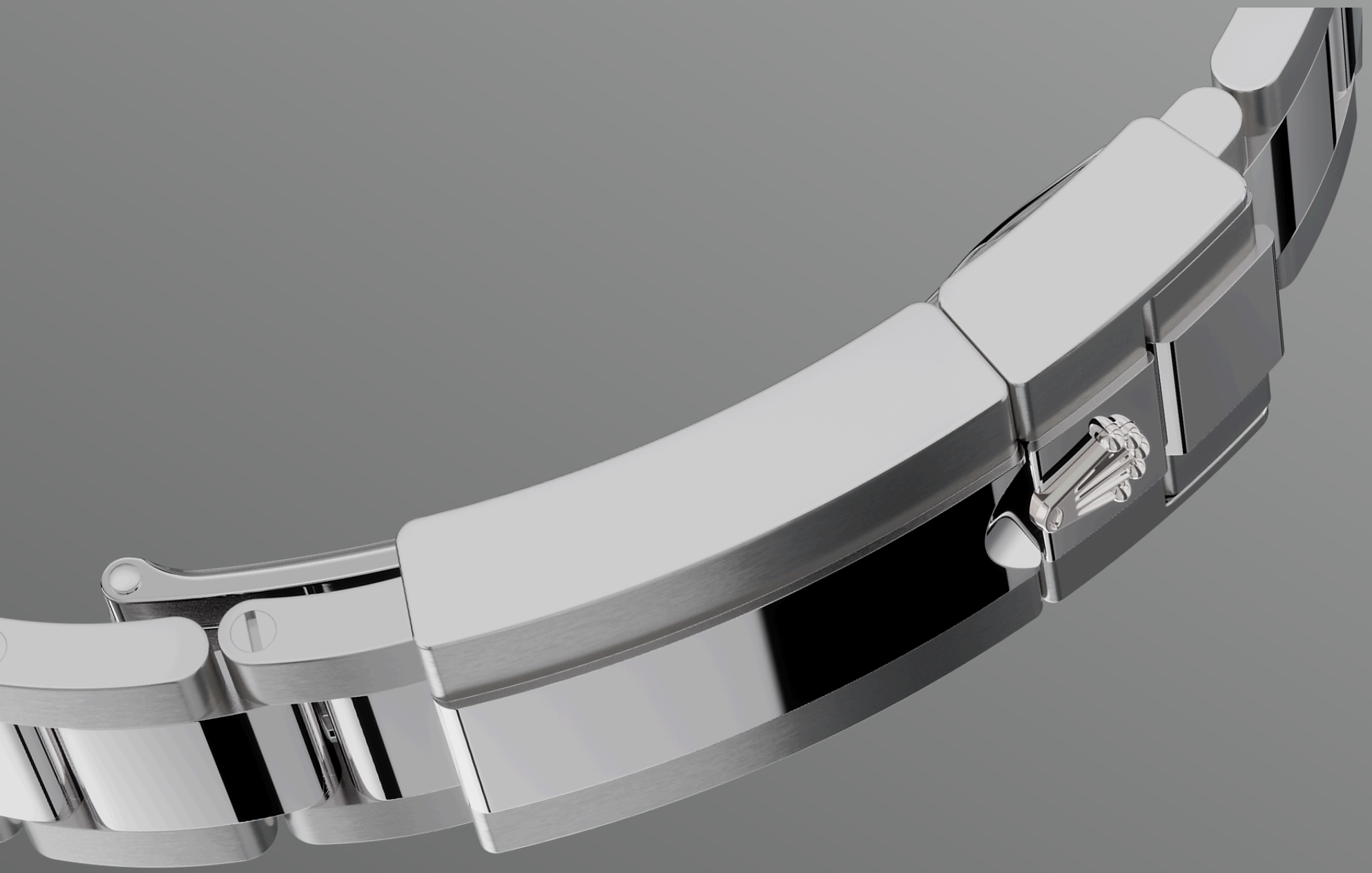


OYSTERSTEEL

Highly resistant to corrosion

Rolex uses Oystersteel for its steel watch cases. Specially developed by the brand, Oystersteel belongs to the 904L steel family, alloys most commonly used in high-technology and in the aerospace and chemical industries, where maximum resistance to corrosion is essential.

Oystersteel is extremely resistant, offers an exceptional finish once polished and maintains its beauty even in the harshest environments.



THE OYSTER BRACELET

Alchemy of form and function

The design, development and production of Rolex bracelets and clasps, as well as the stringent tests they face, involve advanced high technology. And, as with all the components of the watch, aesthetic controls by the human eye guarantee impeccable beauty.

The Oyster bracelet is a perfect alchemy of form and function. First introduced in the late 1930s, this particularly robust and comfortable metal

More Cosmograph Daytona technical details

Reference 126500LN

Model Case

Type

Oyster, 40 mm, Oystersteel

Diameter

40 mm

Material

Oystersteel

Bezel

Black monobloc Cerachrom bezel in ceramic with moulded tachymetric scale

Oyster Architecture

Monobloc middle case, screw-down case back and winding crown

Winding Crown

Screw-down, Triplock triple waterproofness system

Crystal

Scratch-resistant sapphire

Water Resistance

Waterproof to 100 metres / 330 feet

Movement

Type

Perpetual, mechanical chronograph, self-winding

Calibre

4131, manufacture Rolex

Precision

-2/+2 sec/day, after casing

Oscillator

Paramagnetic blue Parachrom hairspring. High-performance Paraflex shock absorbers

Winding

Bidirectional self-winding via Perpetual rotor

Power reserve

Approximately 72 hours

Functions

Centre hour and minute hands, small seconds hand at 6 o'clock. Chronograph via centre seconds hand, 30-minute counter at 3 o'clock and 12-hour counter at 9 o'clock. Stop seconds for exact time setting

Bracelet

Type

Oyster, three-piece solid links

Bracelet Material

Oystersteel

Clasp

Folding Oysterlock safety clasp with Easylink 5 mm comfort extension link

Dial

Type

White

Details

Highly legible Chromalight display with long-lasting blue luminescence

Certification

Type

Superlative Chronometer (COSC + Rolex certification after casing)

Explore and discover more on Rolex.com

All intellectual property rights such as trademarks, service marks, trade names, designs and copyrights are reserved.

Nothing contained in this website may be reproduced without written permission. Rolex reserves the right at all times to modify the models featured in the present website.

