



# Cosmograph Daytona

Oyster, 40 mm, white gold

**This Oyster Perpetual  
Cosmograph Daytona in  
18 kt white gold, with a  
steel and bright black  
dial and an Oyster  
bracelet, features an 18  
kt white gold bezel with  
an engraved  
tachymetric scale.**



THE TACHYMETRIC SCALE

## High-performance chronograph

With its tachymetric scale, its three counters and its pushers, the Cosmograph Daytona was designed to be the ultimate timing tool for endurance racing drivers. The bezel features a tachymetric scale to read average speed over a given distance based on elapsed time.

This scale offers optimal legibility, making the Cosmograph Daytona the ideal instrument for

measuring speeds up to 400 units per hour,  
expressed in kilometres or miles.





STEEL AND BRIGHT BLACK DIAL

## With chronograph counters

This model features a steel and bright black dial with snailed counters, 18 kt gold applique hour markers and hands with a Chromalight display, a highly-legible luminescent material.

The central sweep seconds hand allows an accurate reading of 1/8 second, while the two counters on the dial display the lapsed time in hours and minutes. Drivers can accurately map out their track times and tactics without fail.



18 KT WHITE GOLD

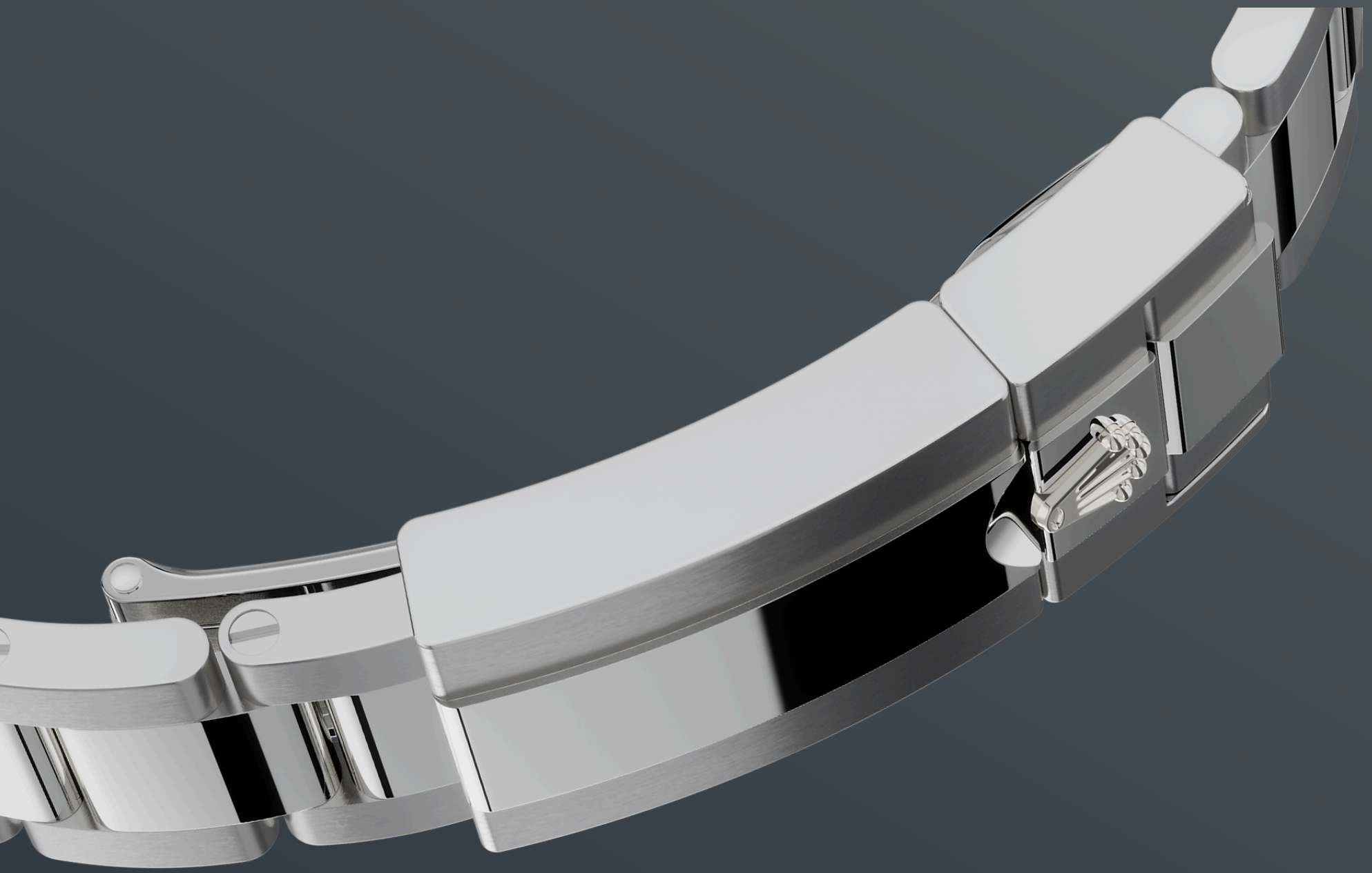
## Commitment to **excellence**

By operating its own exclusive foundry, Rolex has the unrivalled ability to cast the highest quality 18 kt gold alloys. According to the proportion of silver, copper, platinum or palladium added, different types of 18 kt gold are obtained: yellow, pink or white.

They are made with only the purest metals and meticulously inspected in an in-house laboratory with state-of-the-art equipment, before the gold is

formed and shaped with the same painstaking attention to quality. Rolex's commitment to excellence begins at the source.





THE OYSTER BRACELET

## Alchemy of form and function

The design, development and production of Rolex bracelets and clasps, as well as the stringent tests they face, involve advanced high technology. And, as with all the components of the watch, aesthetic controls by the human eye guarantee impeccable beauty.

The Oyster bracelet is a perfect alchemy of form and function. First introduced in the late 1930s, this particularly robust and comfortable metal



bracelet with its broad, flat three-piece links remains the most universal bracelet in the Oyster collection.

# More Cosmograph Daytona technical details

Reference 126509

## Model Case

---

### Type

Oyster, 40 mm, white gold

### Diameter

40 mm

### Material

White gold

### Bezel

Fixed, with engraved tachymetric scale, in 18 kt white gold

### Oyster Architecture

Monobloc middle case, screw-down case back and winding crown

### Winding Crown

Screw-down, Triplock triple waterproofness system

### Crystal

Scratch-resistant sapphire

### Water Resistance

Waterproof to 100 metres / 330 feet

## Movement

---

### Type

Perpetual, mechanical chronograph, self-winding

### Calibre

4131, manufacture Rolex

### Precision

-2/+2 sec/day, after casing

### Oscillator

Paramagnetic blue Parachrom hairspring. High-performance Paraflex shock absorbers

### **Winding**

Bidirectional self-winding via Perpetual rotor

### **Power reserve**

Approximately 72 hours

### **Functions**

Centre hour and minute hands, small seconds hand at 6 o'clock. Chronograph via centre seconds hand, 30-minute counter at 3 o'clock and 12-hour counter at 9 o'clock. Stop seconds for exact time setting

## **Bracelet**

---

### **Type**

Oyster, three-piece solid links

### **Bracelet Material**

18 kt white gold

### **Clasp**

Folding Oysterlock safety clasp with Easylink 5 mm comfort extension link

## **Dial**

---

### **Type**

Steel and bright black

### **Details**

Highly legible Chromalight display with long-lasting blue luminescence

## **Certification**

---

### **Type**

Superlative Chronometer (COSC + Rolex certification after casing)

# Explore and discover more on Rolex.com

**All intellectual property rights such as trademarks, service marks, trade names, designs and copyrights are reserved.**

Nothing contained in this website may be reproduced without written permission. Rolex reserves the right at all times to modify the models featured in the present website.

