



# GMT-Master II

Oyster, 40 mm, Oystersteel

**The Oyster Perpetual  
GMT-Master II in  
Oystersteel with a black  
dial and a Jubilee  
bracelet.**



24-HOUR ROTATABLE BEZEL

## Innovative high- technology

This model features a black dial and a two-colour Cerachrom bezel insert in red and blue ceramic. In addition to conventional hour, minute and seconds hands, the GMT-Master II features an arrow-tipped hand, which circles the dial once every 24 hours, as well as a bidirectional rotatable 24-hour graduated bezel.

The distinctively coloured 24-hour hand displays the “home” reference time in a first time zone

which can be read on the graduations on the bezel. The traveller's local time is easily set by "jumping" from hour to hour, thanks to an ingenious mechanism operated via the winding crown: the hour hand can be adjusted forwards or backwards independently of the minute and seconds hands. This allows travellers to adapt to their new time zone without affecting the precision of their timekeeping.



BLACK DIAL

## High legibility in all circumstances

Like all Rolex Professional watches, the GMT-Master II offers exceptional legibility in all circumstances, and especially in the dark, thanks to its Chromalight display.

The broad hands and hour markers in simple shapes – triangles, circles, rectangles – are filled with a luminescent material emitting a long-lasting glow.



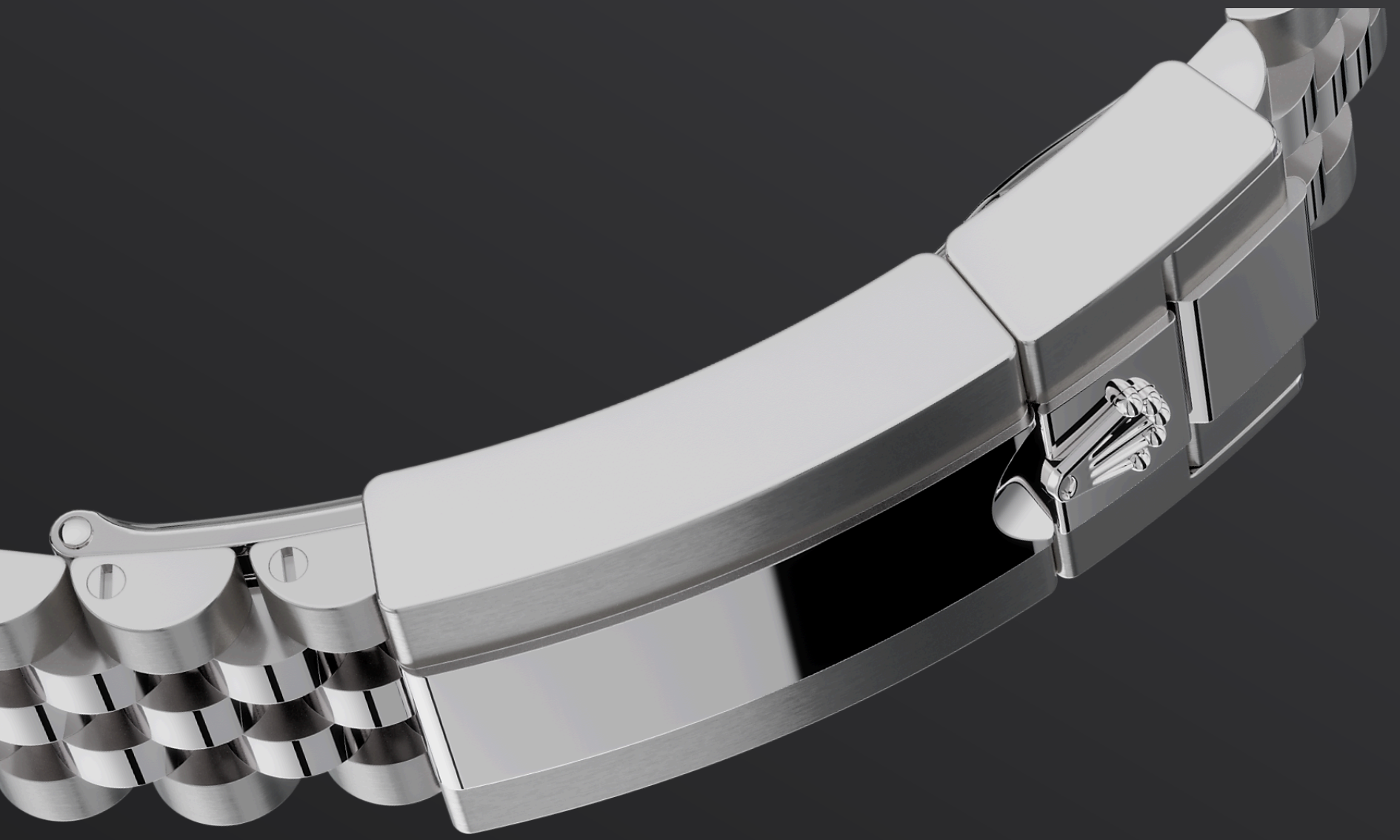


OYSTERSTEEL

## Highly resistant to corrosion

Rolex uses Oystersteel for its steel watch cases. Specially developed by the brand, Oystersteel belongs to the 904L steel family, alloys most commonly used in high-technology and in the aerospace and chemical industries, where maximum resistance to corrosion is essential.

Oystersteel is extremely resistant, offers an exceptional finish once polished and maintains its beauty even in the harshest environments.



THE JUBILEE BRACELET

## Supple and comfortable

This version of the GMT-Master II is fitted with a Jubilee bracelet. Supple and comfortable, the five-piece link Jubilee bracelet was specially created for the launch of the Oyster Perpetual Datejust model in 1945.

The Jubilee bracelet on this model is equipped with a Rolex-designed, patented Oysterlock folding safety clasp, which prevents accidental opening. It also features the Easylink comfort extension link, developed by the brand, which allows the bracelet length to be increased by

approximately 5 mm. A concealed attachment system ensures seamless visual continuity between the bracelet and case.



# More GMT-Master II

## technical details

Reference 126710BLRO

### Model Case

---

#### Type

Oyster, 40 mm, Oystersteel

#### Diameter

40 mm

#### Material

Oystersteel

#### Bezel

Bidirectional rotatable 24-hour graduated bezel. Two-colour red and blue Cerachrom insert in ceramic, moulded numerals and graduations

#### Oyster Architecture

Monobloc middle case, screw-down case back and winding crown

#### Winding Crown

Screw-down, Triplock triple waterproofness system

#### Crystal

Scratch-resistant sapphire, Cyclops lens over the date

#### Water Resistance

Waterproof to 100 metres / 330 feet

### Movement

---

#### Type

Perpetual, mechanical, self-winding, GMT function

#### Calibre

3285, Manufacture Rolex

#### Precision

-2/+2 sec/day, after casing

#### Oscillator

Paramagnetic blue Parachrom hairspring. High-performance Paraflex shock absorbers

### **Winding**

Bidirectional self-winding via Perpetual rotor

### **Power reserve**

Approximately 70 hours

### **Functions**

Centre hour, minute and seconds hands. 24-hour display. Second time zone with independent rapid-setting of the hour hand.

Instantaneous date. Stop-seconds for precise time setting

## **Bracelet**

---

### **Type**

Jubilee, five-piece links

### **Bracelet Material**

Oystersteel

### **Clasp**

Folding Oysterlock safety clasp with Easylink 5 mm comfort extension link

## **Dial**

---

### **Type**

Black

### **Details**

Highly legible Chromalight display with long-lasting blue luminescence

## **Certification**

---

### **Type**

Superlative Chronometer (COSC + Rolex certification after casing)

# Explore and discover more on Rolex.com

**All intellectual property rights such as trademarks, service marks, trade names, designs and copyrights are reserved.**

Nothing contained in this website may be reproduced without written permission. Rolex reserves the right at all times to modify the models featured in the present website.

