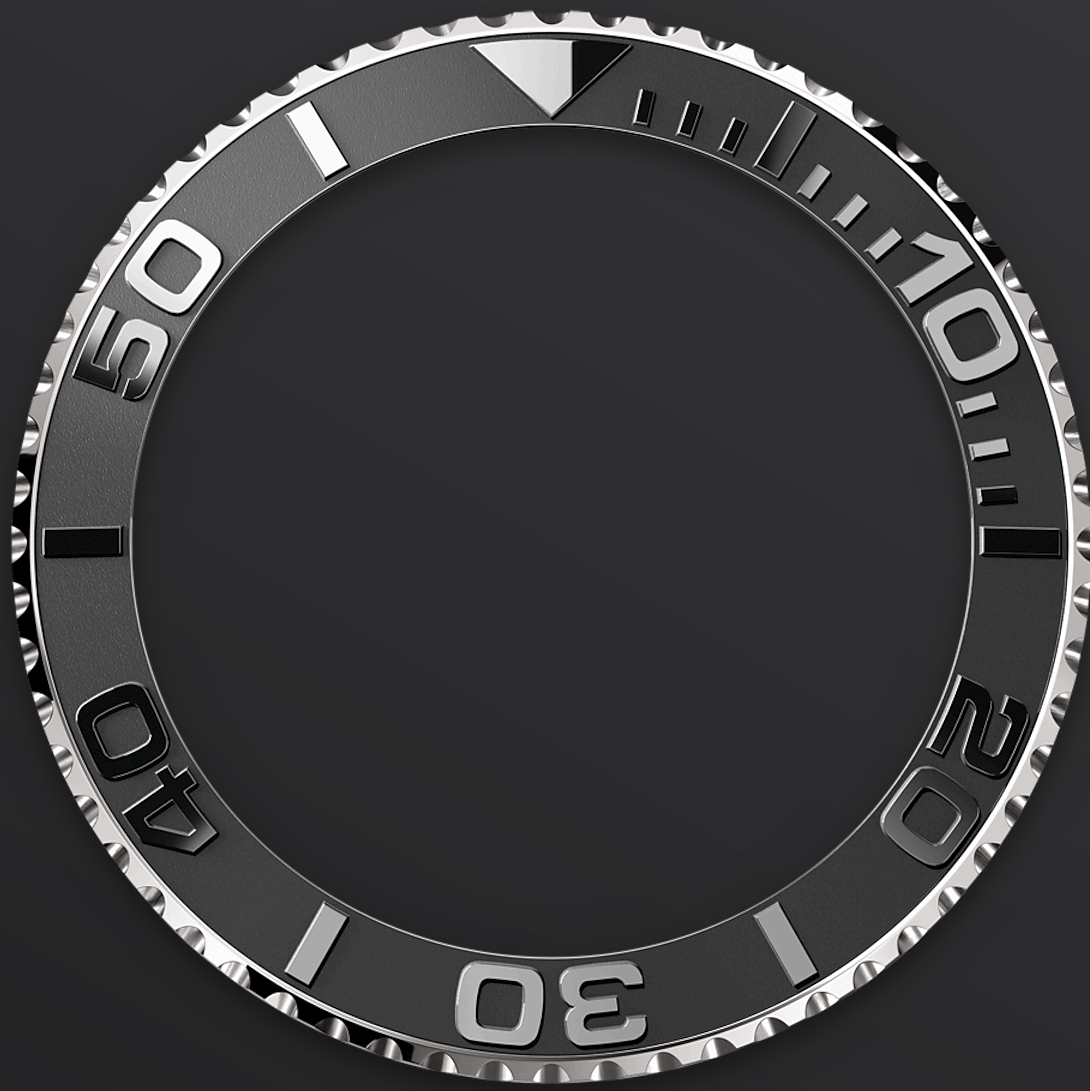




# Yacht-Master 42

Oyster, 42 mm, RLX titanium

**The Oyster Perpetual  
Yacht-Master 42 in RLX  
titanium with an intense  
black dial and an Oyster  
bracelet.**

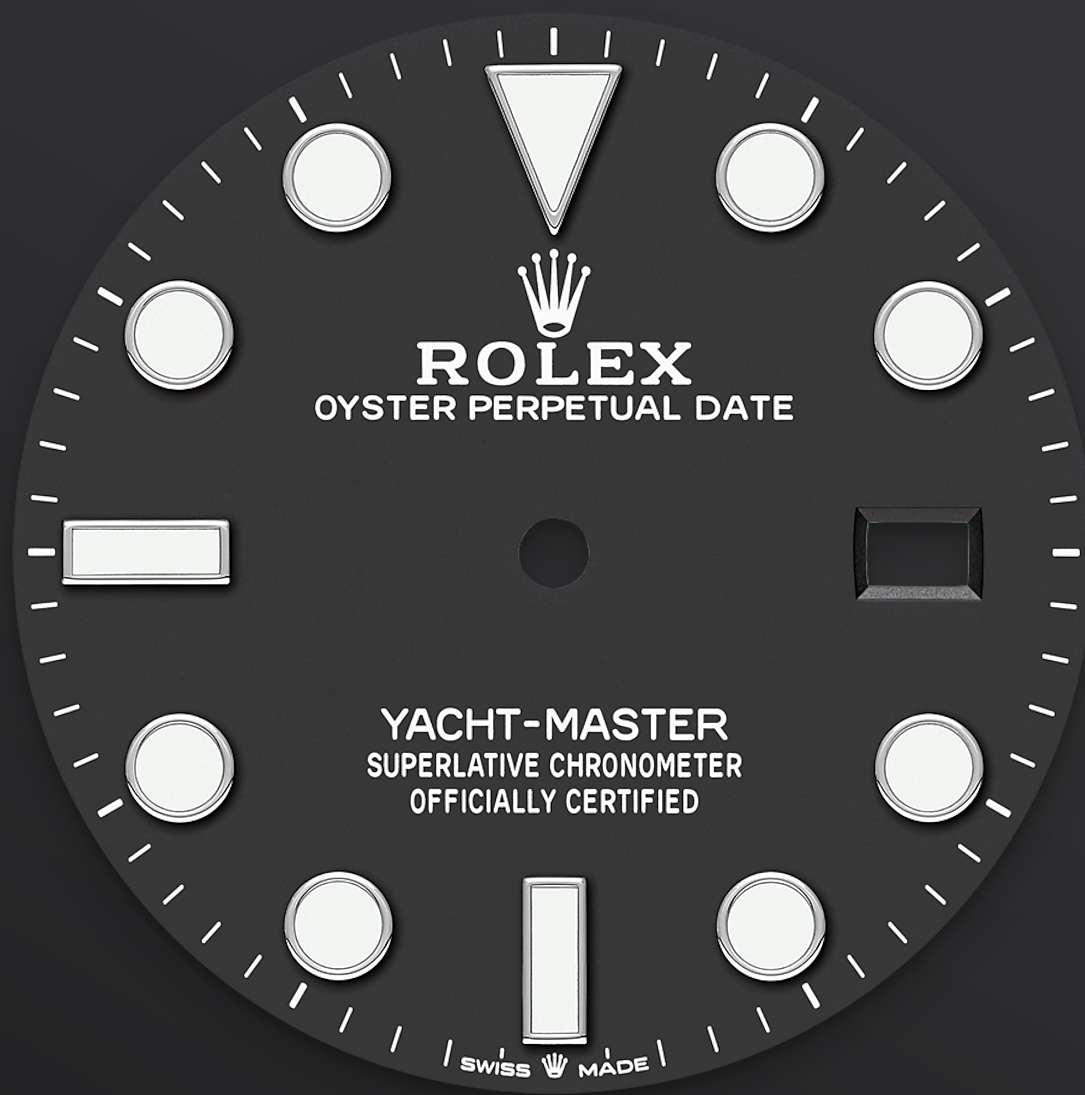


BIDIRECTIONAL ROTATABLE BEZEL

## Timing the distance

The Yacht-Master's bidirectional rotatable 60-minute graduated bezel is made entirely from precious metals or fitted with a Cerachrom insert in high-tech ceramic. The raised polished numerals and graduations stand out clearly against a matt, sand-blasted background.

This functional bezel – which allows the wearer to calculate, for example, the sailing time between two buoys – is also a key component in the model's distinctive visual identity.



INTENSE BLACK DIAL

## Exceptional legibility

Like all Rolex Professional watches, the Yacht-Master 42 offers exceptional legibility in all circumstances, and especially in the dark, thanks to its Chromalight display.

The broad hands and hour markers in simple shapes – triangles, circles, rectangles – are filled with a luminescent material emitting a long-lasting glow.



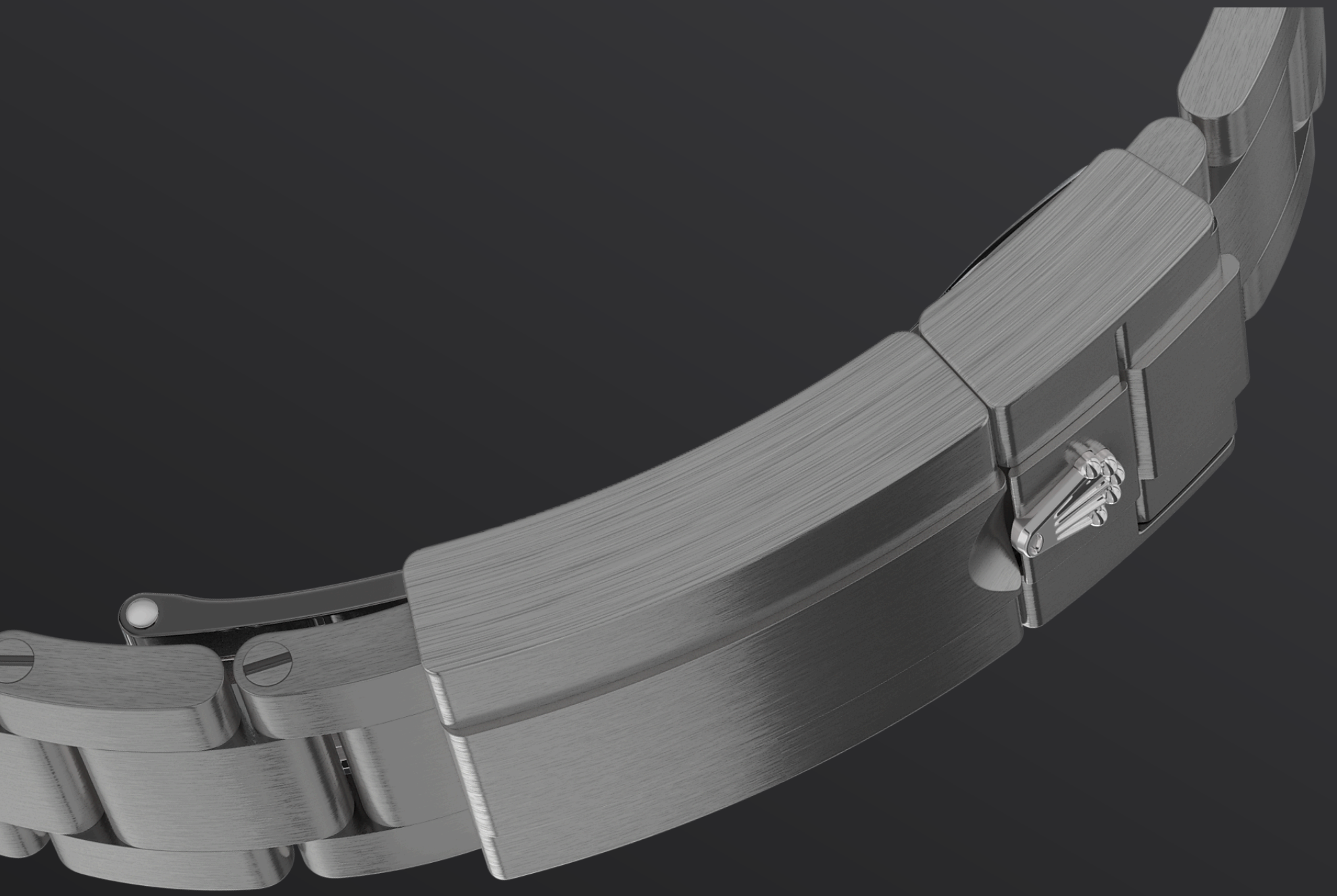


RLX TITANIUM

## Ultralight resistance

RLX titanium is a grade 5 titanium alloy specially selected by Rolex. Like all titanium alloys, it is especially lightweight and is noted for its mechanical strength and corrosion resistance.

Another characteristic of RLX titanium is the possibility of working it to give a polished or satin finish according to the brand's specifications. Its high mechanical strength makes it complex to work with, and the decision to use it has required the introduction of special production processes.



THE OYSTER BRACELET

## Alchemy of form and function

The Yacht-Master 42, made from RLX titanium, is fitted on an Oyster bracelet. Developed at the end of the 1930s, this three-piece link bracelet remains the most universal in the Oyster Perpetual collection and is known for its robustness.

The Oyster bracelet of this new version of the Yacht-Master 42 features the Oysterlock folding safety clasp, which prevents accidental opening. It is also equipped with the Easylink comfort

extension link, developed by Rolex, which allows the wearer to easily adjust the bracelet length by approximately 5 mm. The Oyster bracelet in RLX titanium also includes patented ceramic inserts – designed by the brand – inside the links to enhance its flexibility on the wrist and its longevity.

# More Yacht-Master technical details

Reference 226627

## Model Case

---

### Type

Oyster, 42 mm, RLX titanium

### Diameter

42 mm

### Material

RLX titanium

### Bezel

Bidirectional rotatable 60-minute graduated bezel with matt black Cerachrom insert in ceramic, polished raised numerals and graduations

### Oyster Architecture

Monobloc middle case, screw-down case back and winding crown

### Winding Crown

Screw-down, Triplock triple waterproofness system

### Crystal

Scratch-resistant sapphire, Cyclops lens over the date

### Water Resistance

Waterproof to 100 metres / 330 feet

## Movement

---

### Type

Perpetual, mechanical, self-winding

### Calibre

3235, Manufacture Rolex

### Precision

-2/+2 sec/day, after casing

### Oscillator

Paramagnetic blue Parachrom hairspring. High-performance Paraflex shock absorbers

### Winding

Bidirectional self-winding via Perpetual rotor



**Power reserve**

Approximately 70 hours

**Functions**

Centre hour, minute and seconds hands. Instantaneous date with rapid setting. Stop-seconds for precise time setting

## Bracelet

---

**Type**

Oyster, three-piece solid links

**Bracelet Material**

RLX titanium

**Clasp**

Folding Oysterlock safety clasp with Easylink 5 mm comfort extension link

## Dial

---

**Type**

Intense black

**Details**

Highly legible Chromalight display with long-lasting blue luminescence

## Certification

---

**Type**

Superlative Chronometer (COSC + Rolex certification after casing)

# Explore and discover more on Rolex.com

**All intellectual property rights such as trademarks, service marks, trade names, designs and copyrights are reserved.**

Nothing contained in this website may be reproduced without written permission. Rolex reserves the right at all times to modify the models featured in the present website.

