

PERPETUAL
1908

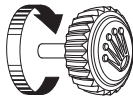


ROLEX

WEARING THE WATCH FOR THE FIRST TIME

Before being worn for the first time, or if it has stopped, a Rolex watch must be wound manually in order to function correctly and precisely.

To wind the Perpetual 1908 manually, turn the winding crown several times clockwise. (Turning in the other direction has no effect.) A minimum of 25 turns is required for adequate partial winding. The watch will then be wound automatically as long as it is worn on the wrist.



The green seal accompanying your Rolex watch is a symbol of its status as a Superlative Chronometer. This exclusive designation attests that it has successfully undergone a series of specific final controls by Rolex in its own laboratories in addition to the official COSC certification of its movement. This unique testing of its chronometric precision, waterproofness, self-winding and reliability pushes back the boundaries of performance and makes Rolex a benchmark for excellence in mechanical watches. For further information, please visit [rolex.com](https://www.rolex.com).



THE HEART OF THE 1908 MODEL

PERPETUAL 1908	4-5
----------------	-----

USING YOUR WATCH

OVERVIEW	6-7
SETTING THE WATCH	8-9
DUALCLASP	10-11

ROLEX SERVICE

CARING FOR YOUR ROLEX	12-13
AFTER-SALES SERVICE	14-15
WORLDWIDE SERVICE NETWORK	16

ROLEX.COM

12



ROLEX
GENEVE

PERPETUAL 1908

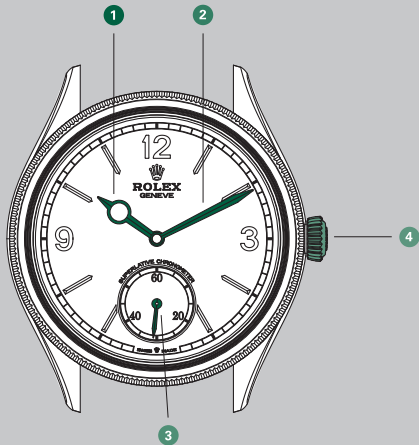
The Perpetual 1908, inspired by one of the first Rolex watches with a Perpetual rotor, features a sleek dial displaying the Arabic numerals 3, 9 and 12, and faceted hour markers. Above the small seconds counter at 6 o'clock, the inscription 'Superlative Chronometer' attests to the watch's performance. The hour hand is characterized by a circle just before its tip, while the minute hand is shaped like a two-edged sword. Crafted from 18 kt. gold, the slender case is fitted with a domed bezel edged with discreet fluting.

The Perpetual 1908 is equipped with a self-winding mechanical movement entirely manufactured by Rolex. The exclusive architecture and refined decoration of this movement are visible thanks to the transparent case back.

The Perpetual 1908 is mounted on an alligator leather strap fitted with a Dualclasp.

OVERVIEW

- 1 Hour hand
- 2 Minute hand
- 3 Small seconds
- 4 Winding crown



SETTING THE WATCH

Manual winding (*position 0*)

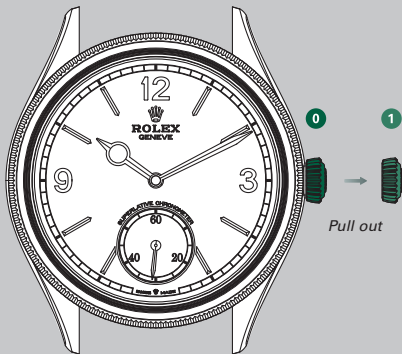
The crown is tight against the case. To wind the watch manually, turn the crown clockwise. (Turning in the other direction has no effect.) When setting the watch for the first time or if the watch has stopped, complete a minimum of 25 turns for partial winding.

Setting the time (*position 1*)

The crown is pulled out to the first notch. The small seconds hand is stopped, allowing you to set the time to the precise second. To set the hour and minute, turn the crown in either direction.

Initial winding and setting

- A. Wind the watch manually (*position 0*).
- B. Set the time (*position 1*).



After every use, return the crown to *position 0*.
The crown should never be adjusted underwater.

DUALCLASP

The Perpetual 1908 is mounted on a brown or black alligator leather strap fitted with a Dualclasp, a double folding clasp designed by Rolex and patented.

Opening the clasp

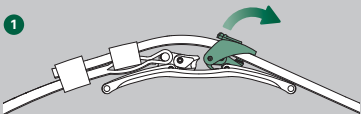
- 1 Lift the small Rolex crown-shaped lever
- 2 Unfold the first blade
- 3 Lift the small lever at the end of the other strap section and unfold the second blade

Closing the clasp

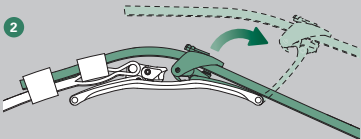
- 1 Fold the second blade and fasten it by pressing down on the small lever
- 2 Fold the first blade, sliding the strap through the loops
- 3 Fasten the clasp by pressing down on the small Rolex crown-shaped lever

Opening

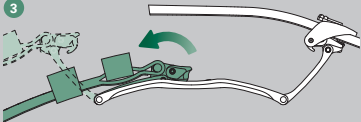
1



2

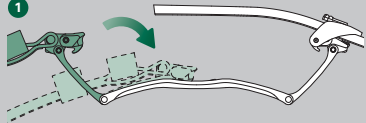


3



Closing

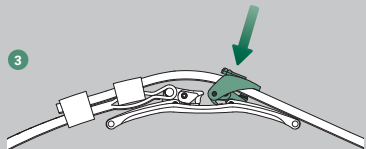
1



2



3



CARING FOR YOUR ROLEX

Thanks to Rolex expertise, your watch will require very little day-to-day care.

You can help preserve its luster by cleaning it occasionally with a microfiber cloth. You can also wash the case from time to time using soapy water and a soft brush.

Before cleaning your watch, always ensure that the crown is pushed tight against the case to guarantee waterproofness.

To keep the leather strap in good condition, it is recommended that you protect it from water and humidity.

AFTER-SALES SERVICE

Rolex after-sales servicing ensures that your timepiece will continue to perform optimally in terms of precision, reliability and waterproofness, and also retain its particular luster.

The proper functioning and timekeeping accuracy of your Rolex watch movement is dependent on high-performance lubricants specially developed by the brand. Over time, the properties of all lubricants will degrade, which can affect a movement's precision.

Additionally, to verify the waterproofness of your watch, it is important to carry out stringent technical checks.

Rolex therefore recommends that you periodically return your watch to one of its Official Rolex Jewelers or Service Centers for complete servicing, which is always performed by a Rolex-approved watchmaker.

During a complete service, the watch is dismantled and all of its components – the case, bracelet and movement – are closely examined.

The movement is entirely disassembled and all the parts are carefully inspected. Those that no longer meet Rolex requirements are systematically replaced by new components. The movement is lubricated on reassembly. The case and bracelet are re-polished or satin-finished according to their original finish, restoring their shine and luster while removing any marks or scratches.

At the end of the process, your Rolex watch undergoes a series of tests to verify its functions, waterproofness and power reserve, as well as the precision of its movement.

After a complete Rolex service, your watch is covered by a service warranty.

WORLDWIDE SERVICE NETWORK

The network of Official Rolex Jewelers and Service Centers covers more than 100 countries around the world and draws on the expertise of highly skilled watchmakers, carefully selected and trained by Rolex.

Official Rolex Jewelers can advise you on all the technical aspects of your watch's functions. Whether your bracelet needs sizing or it is time for a complete service, highly qualified Rolex watchmakers are on hand worldwide to meet all of your service needs.

For a list of Official Rolex Jewelers and Service Centers, please visit [rolex.com](https://www.rolex.com).


ROLEX.COM

We invite you to visit **rolex.com**,
a privileged place to learn more about
the functions of your Rolex watch
and about the quality, know-how and
fundamental values of the brand.

Welcome to the world of Rolex.

© Trademarks:



ROLEX, , OYSTER, AIR-KING, CERACHROM, CHROMALIGHT, CHRONERGY, COSMOGRAPH, CROWNCLASP, CYCLOPS, DATEJUST, DAY-DATE, DAYTONA, DEEPSEA, DEEPSEA CHALLENGE, EASYLINK, EVEROSE, EXPLORER, EXPLORER II, GMT-MASTER, GMT-MASTER II, JUBILEE, MICROSTELLA, MILGAUSS, OYSTERCLASP, OYSTERFLEX, OYSTERLOCK, OYSTER PERPETUAL, OYSTERSTEEL, PARACHROM, PARAFLEX, PEARLMASTER, PERPETUAL, PRESIDENT, RINGLOCK, RLX, ROLESIUM, ROLESOR, ROLEX GLIDELock, SAROS, SEA-DWELLER, SKY-DWELLER, SUBMARINER, SUNDUST, SYLOXI, TRIPLOCK, TWINLOCK, YACHT-MASTER. CELLINI.

Rolex reserves the right to modify the models illustrated in this publication at any time.

© Rolex Watch USA, Inc., Rolex Building, 665 Fifth Avenue, New York, NY 10022
IMR-1908-US-23 - 4.2023 - Printed in Switzerland

[rolex.com](https://www.rolex.com)

