

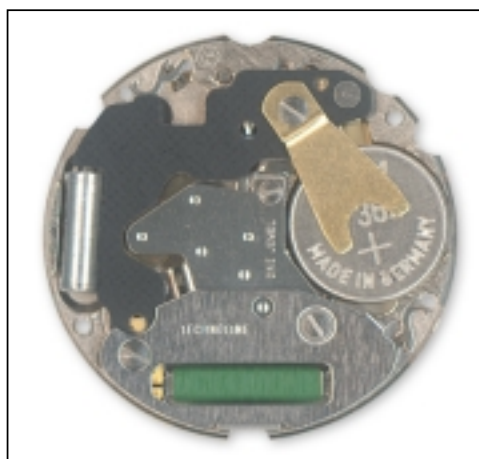


# technotime

© UP DATE 01.01.03 / PAGE 1

## 70220 B

|                       |
|-----------------------|
|                       |
| H = 3,43 mm           |
| 8 3/4'''<br>ø 19,4 mm |



### CARACTERISTIQUES BTECHNIQUES

#### Cage

Diamètre total  
Diamètre encageage

Hauteur sur filet  
Hauteur sur tige  
Hauteur mouvement  
Hauteur totale

#### Tige de mise à l'heure

Diamètre du filetage

#### Résonateur

Fréquence

#### Moteur

Nombre d'impulsions  
par minute

#### Execution:

Swiss made: 7 rubis  
french parts: 1 rubis

#### Finition:

Swiss made: doré  
french parts: nickelé

### TECHNICAL DATA

#### Frame

Overall diameter  
Casing diameter

Height at bead  
Height at stem  
Movement height  
Total height

#### Hand-setting stem

Threading diameter

#### Resonator

Frequency

#### Motor

Number of impulses p/minute

#### Version:

Swiss made: 7 jewels  
Version: 1 jewel

#### Finishing:

Swiss made: gold plated  
Version: nickel plated

### TECHNISCHE DATEN

#### Gestell

Gesamte-Durchmesser  
Durchmesser zur Gehäuse-  
Passung

Höhe am Wulst  
Höhe an der Welle  
Werkhöhe  
Gesamte Höhe

#### Stellwelle

Gewindedurchmesser

#### Resonator

Frequenz

#### Motor

Impulszahl p/Minute

#### Ausführung:

Swiss made: 7 Steine  
Ausführung: 1 Stein

#### Ausführung:

Swiss made: vergoldet  
Ausführung: vernicklet

### 70220 B

20,000mm  
19,400mm

1,530mm  
1,930mm  
3,430mm  
3,530mm

0,900mm

32 768 Hz

60

  
**technotime**  
www.technotime.com

### TECHNOTIME SA

Site Dubied 10  
2108 COUVET - SUISSE  
Tél: +41 (0) 32 864 90 10  
Fax: +41 (0) 32 864 90 19  
Email: tt@technotime.com

### TECHNOTIME MICROTECHNIQUE SAS

2, Rue de l'Industrie  
25800 VALDAHON - FRANCE  
Tél: 33 (0) 3 81 56 78 00  
Fax: 33 (0) 3 81 56 78 03  
Email: tt.microtechnique@technotime.com

### TECHNOTIME ASIA LTD

21st floor Lee Fund Centre,  
31 Wong Chuk Hang Road  
Aberdeen - HONG KONG  
Tél: (852) 25551879  
Fax: (852) 25544359  
Email: tt.asia@technotime.com

# 70220 B

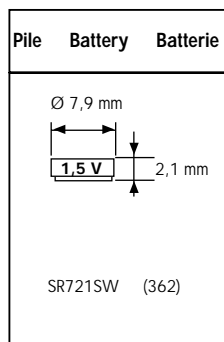
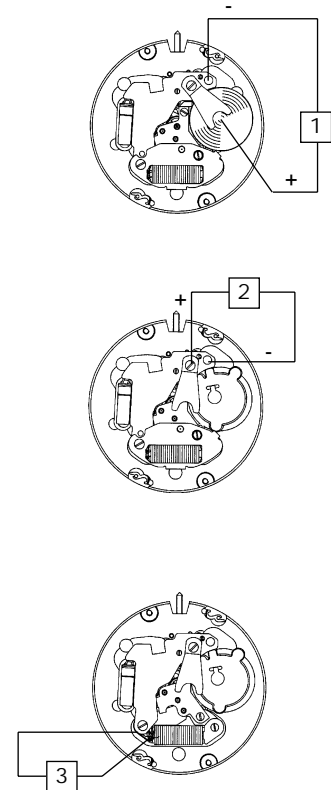


8 3/4'''  
 ∅ 19,4 mm  
 H = 3,43 mm

© UP DATE 01.01.03 / PAGE 2

## CONTRÔLES TESTS KONTROLLEN

| Position<br>Position<br>Messpunkt | Echelle de mesure<br>Measuring range<br>Messbereich | Mesure<br>Measurement<br>Messung   | Contrôle<br>Test<br>Kontrolle  | Remarques<br>Remarks<br>Bemerkungen   |
|-----------------------------------|---|--|--|---|
| 1                                 | 2 V   | 1,55 V   | Tension de la pile<br>Battery voltage<br>Spannung der Batterie   |   |
| 2                                 | 2 V   | Le mouvement doit fonctionner sous 1,35 V<br>The movement must be running under 1,35 V<br>Das Werk muss unter 1,35 V Spannung laufen | Limite inférieure de la tension de fonctionnement<br>Lower working voltage limit<br><br>Untere Funktionsspannungsgrenze  | Pile enlevée<br>Vis de bride serrée<br>Alimentation extérieure  |
|                                   | 10 µA · 1,55 V                                      | 0,6 µA ≤   ≤ 1,4 µA  | Consommation du mouvement<br>Consumption of movement<br>Stromverbrauch vom Werke   | Remoted battery<br>Tightened bridle screw<br>Outside power supply   |
|                                   | 10 µA · 1,55 V                                      | 0,1 µA ≤   ≤ 0,4 µA  | Consommation en fonction stop<br>Tige en position 3<br>Consumption in stop position<br>Handsetting stem in position 3<br>Stromverbrauch in Stop-Stellung<br>Stellwelle in Stellung 3 | Entfernte Batterie<br>Angezogene Bügelschraube<br>Speizegerät   |
| 3                                 | Ω · 0,2 V maxi                                      | 1200 Ω < R < 1400 Ω  | Résistance de la bobine<br>Resistance of coil<br>Widerstand der Spule  | Pile et écran magnétique enlevés<br>Battery and magnetic screen remoted<br>Batterie und Magnetschirm entfernt |



| Fonctions de la tige<br>Handsetting-stem functions  | Funktionen der Stellwelle   |
|---|---|
|   |   |
| 1 Marche normale<br>2a Correction de la date<br>2b Correction du jour<br>3 Mise à l'heure, stop-seconde avec interruption du courant pour le moteur<br><br>1 Regular running<br>2a Date correction<br>2b Day correction<br>3 Handsetting, stop-second with interruption of current to the motor | 1 Normaler Gang<br>2a Datumkorrektur<br>2b Tagkorrektur<br>3 Zeigerstellen, Sekundenstopp mit Unterbrechung der Motorspeisung |

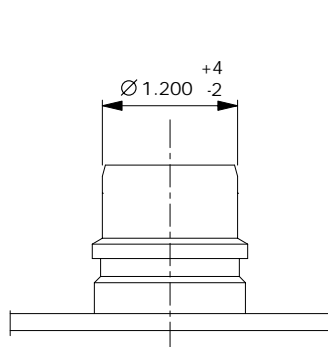
70220 B



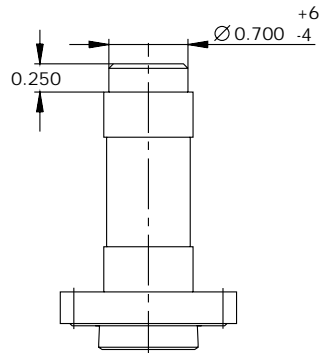
8 3/4'''  
 ∅ 19,4 mm  
 H = 3,43 mm

© UP DATE 01.01.03 / PAGE 3

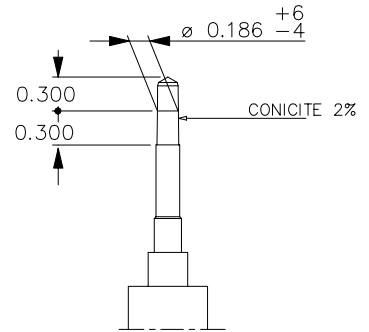
**AIGUILLAGE      HAND-FITTING      ZEIGERSETZEN**



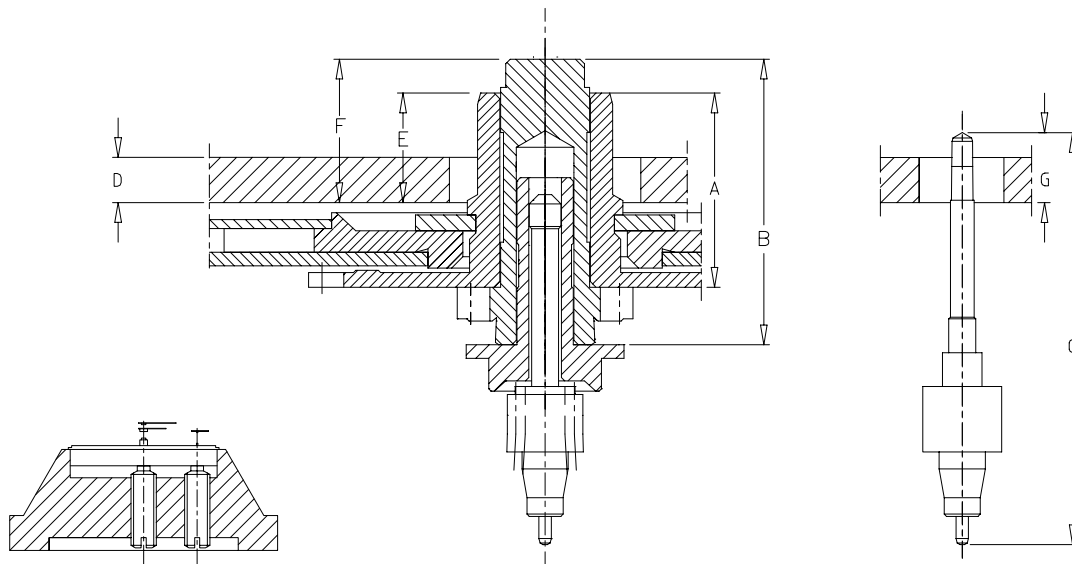
Roue des heures  
 Hour weehl  
 Stundenrad



Chaussee  
 Cannon pinion  
 Minutenrohr



Petite seconde  
 Small second  
 Kleine Sekunde



ATTENTION : CHASSAGE DES AIGUILLES, UTILISER UN PORTE-PIECES A VIS  
 NOTICE : FOR DRIVING IN OF THE HANDS USE MOVEMENT HOLDER WITH SCREW  
 ACHTUNG : ZUM EINPRESSEN VON DER ZEIGER VERWENDEN SIE EINEN WERKHALTER MIT STUETZSCHRAUBE

| N° aiguillage | A     | B     | C     | D     | E     | F     | G     |
|---------------|-------|-------|-------|-------|-------|-------|-------|
| 1             | 1.720 | 2.530 | 3.650 | 0.400 | 0.970 | 1.270 | 0.620 |

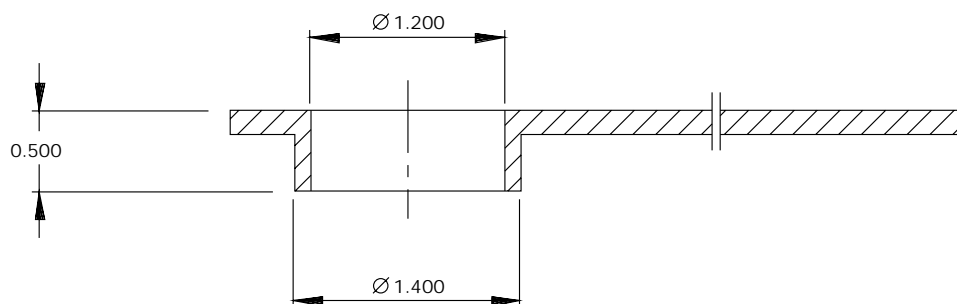
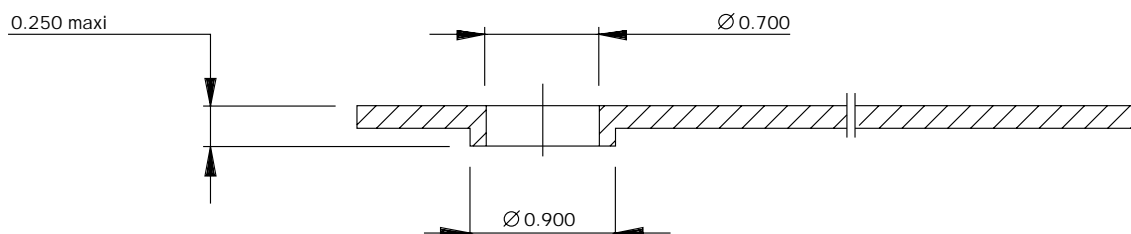
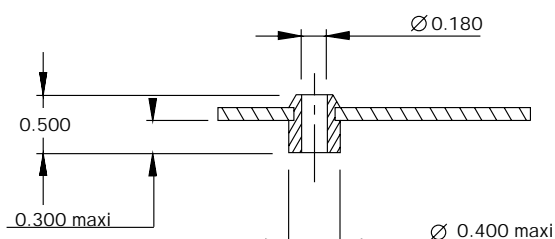
70220 B



8 3/4'''  
∅ 19,4 mm  
H = 3,43 mm

© UP DATE 01.01.03 / PAGE 4

## AIGUILLES HANDS ZEIGER



### TECHNOTIME SA

Site Dubied 10  
2108 COUVET - SUISSE  
Tél: +41 (0) 32 864 90 10  
Fax: +41 (0) 32 864 90 19  
Email: tt@technotime.com

### TECHNOTIME MICROTECHNIQUE SAS

2, Rue de l'Industrie  
25800 VALDAHON - FRANCE  
Tél: 33 (0) 3 81 56 78 00  
Fax: 33 (0) 3 81 56 78 03  
Email: tt.microtechnique@technotime.com

### TECHNOTIME ASIA LTD

21st floor Lee Fund Centre,  
31 Wong Chuk Hang Road  
Aberdeen - HONG KONG  
Tél: (852) 25551879  
Fax: (852) 25544359  
Email: tt.asia@technotime.com

# 70220 B

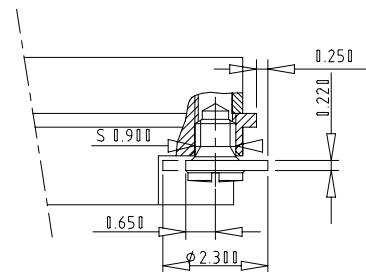
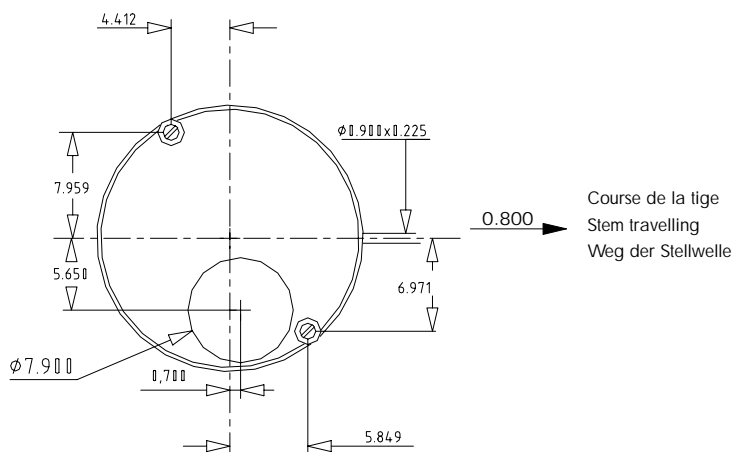
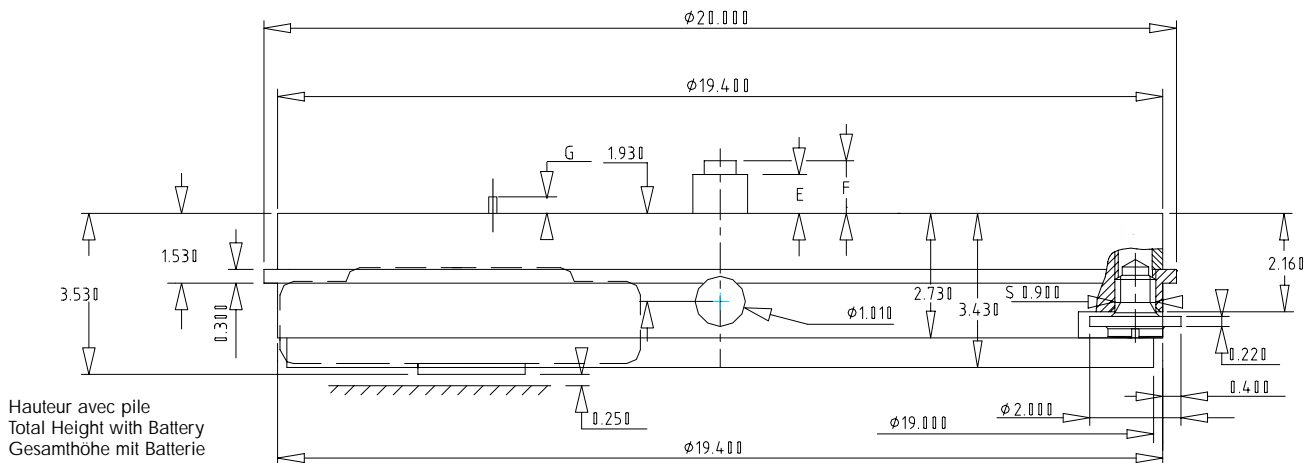


8 3/4'''

Ø 19,4 mm  
H = 3,43mm

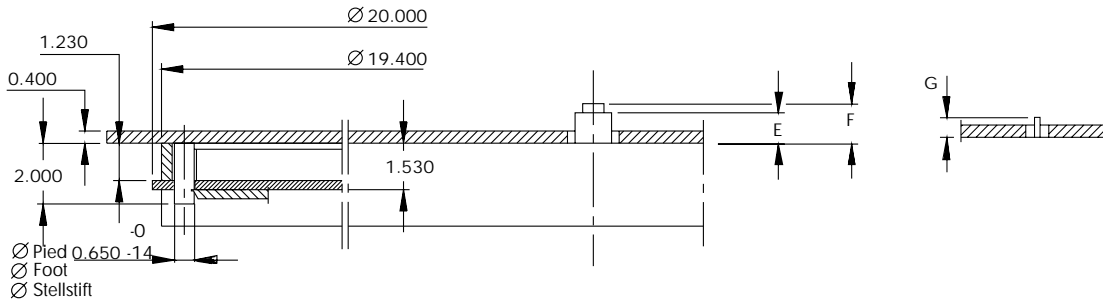
© UP DATE 01.01.03 / PAGE 5

## EMBOÎTAGE CASING EINSCHALEN



| N° aiguillage | E     | F     | G     |
|---------------|-------|-------|-------|
| 1             | 0.970 | 1.270 | 0.620 |

### CADRAN DIAL ZIFFERBLATT



| N° aiguillage | E     | F     | G     |
|---------------|-------|-------|-------|
| 1             | 0.970 | 1.270 | 0.620 |

